



REFE

RENCE

BOOK

Designing Durability. Together.

WHO WE ARE

The ideas leading our projects



MISSION



General Membrane aims at finding new solutions through **innovative systems, products and technologies** that can meet the new roofing functions, ensuring **DURABILITY**



Located Ceggia, in the province of Venice, General Membrane is an Italian company operating in the field of waterproofing materials for construction industry. It designs, produces and commercializes in Italy and all over the World systems, products and technologies with successful features and performance, developed to resist to one of the biggest strenghts known by man: time.



For over 25 years General Membrane has been working with designers and companies to contribute to guarantee the building durability and the serenity of those who live it every day.



QUALITY, SAFETY

characterize our daily commitment and include scrupulous

AND SUSTAINABILITY

management systems certified at international level.





REFERENCES

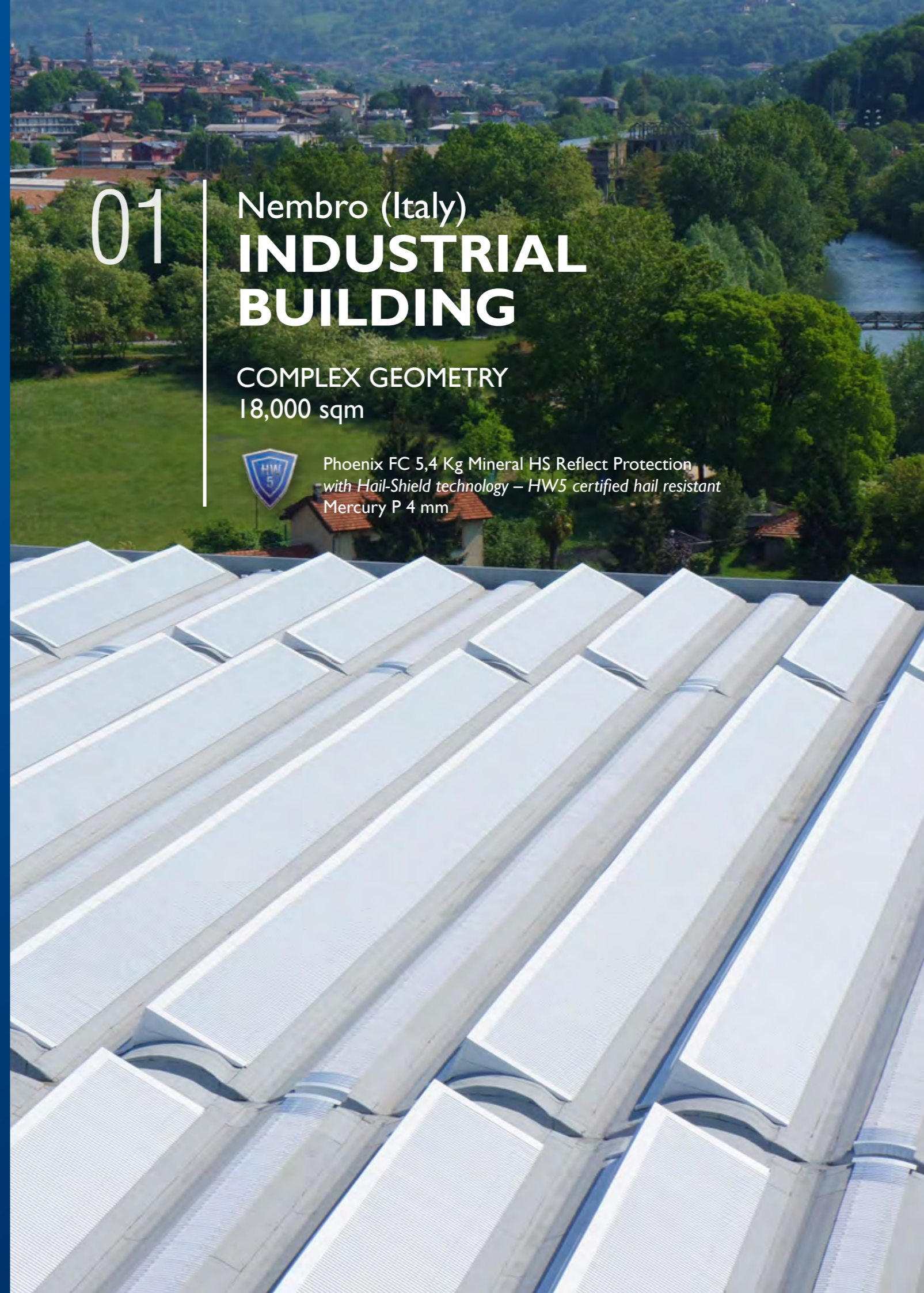
01

Nembro (Italy)
**INDUSTRIAL
BUILDING**

COMPLEX GEOMETRY
18,000 sqm



Phoenix FC 5,4 Kg Mineral HS Reflect Protection
with Hail-Shield technology – HW5 certified hail resistant
Mercury P 4 mm



02

Luckenwalde (Germany)
**INDUSTRIAL
BUILDING**

SLOPED ROOF
9,000 sqm

Corona Top PV250 S5
Termostar V 2 mm



Montevarchi (Italy)

INDUSTRIAL BUILDING

03

FLAT ROOF
1,300 sqm

Phoenix Super 4 mm



Dimitrovgrad (Bulgaria)

RAILWAY OVERPASS

04

ROAD WATERPROOFING
5,000 sqm

Gemini Ponti 5 mm
Solution realized by VJF Ltd



Queenstown (New Zealand)
**RESIDENTIAL
BUILDING**

FLAT ROOF
200 sqm

Lybra P 4,5 Kg Mineral

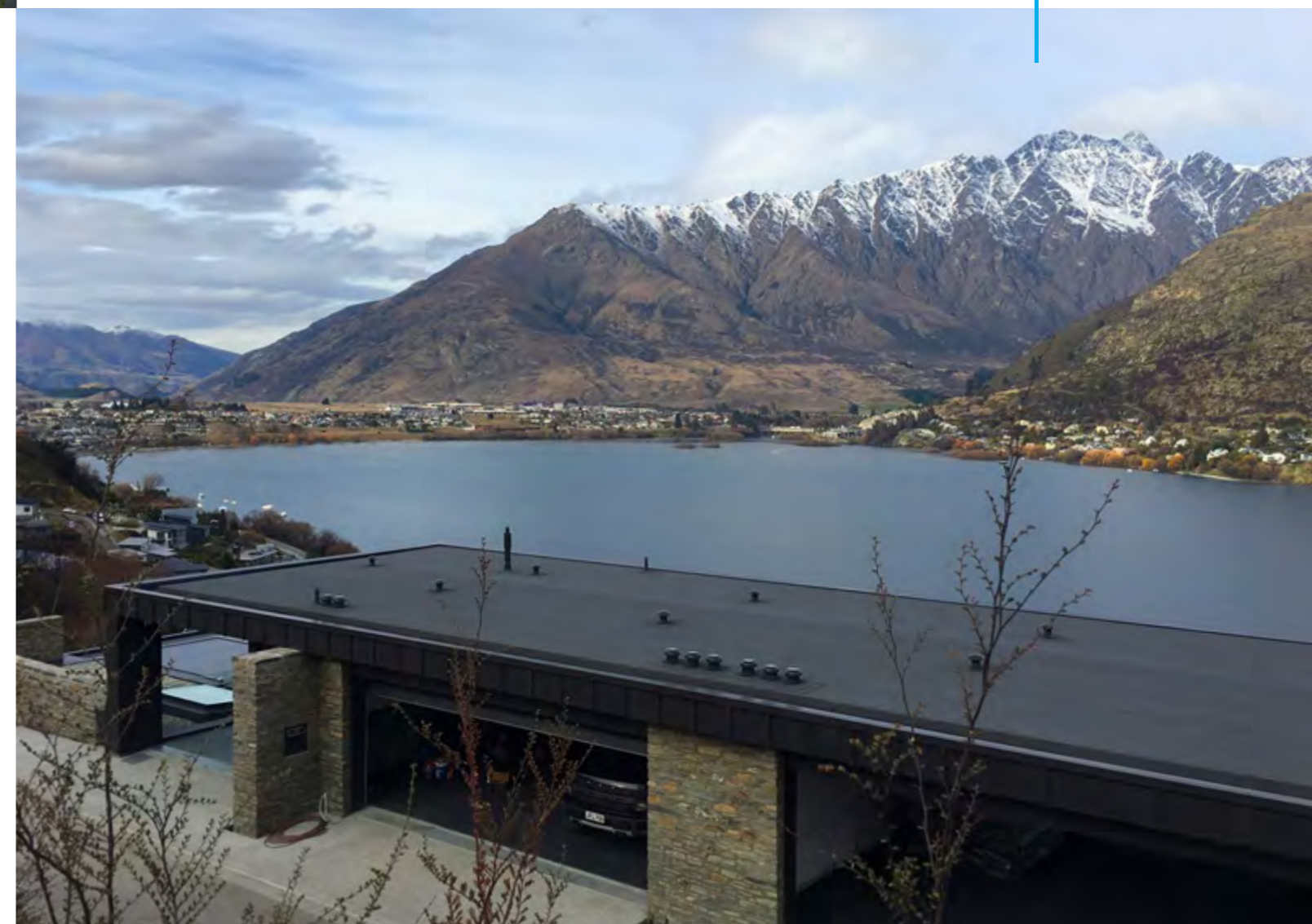
06

05

Auckland (New Zealand)
**RESIDENTIAL
BUILDING**

FLAT ROOF
500 sqm

Gemini P 4,5 Kg Mineral



07

Sofia (Bulgaria)

RESIDENTIAL COMPLEX

FLAT ROOF
1,050 sqm

Galaxy FC 5 Kg Mineral
Solution realized by VJF Ltd



Hannover (Germany)
**EXHIBITION
COMPLEX**

08

FLAT ROOF
200,000 sqm

Corona Top PV250 S5

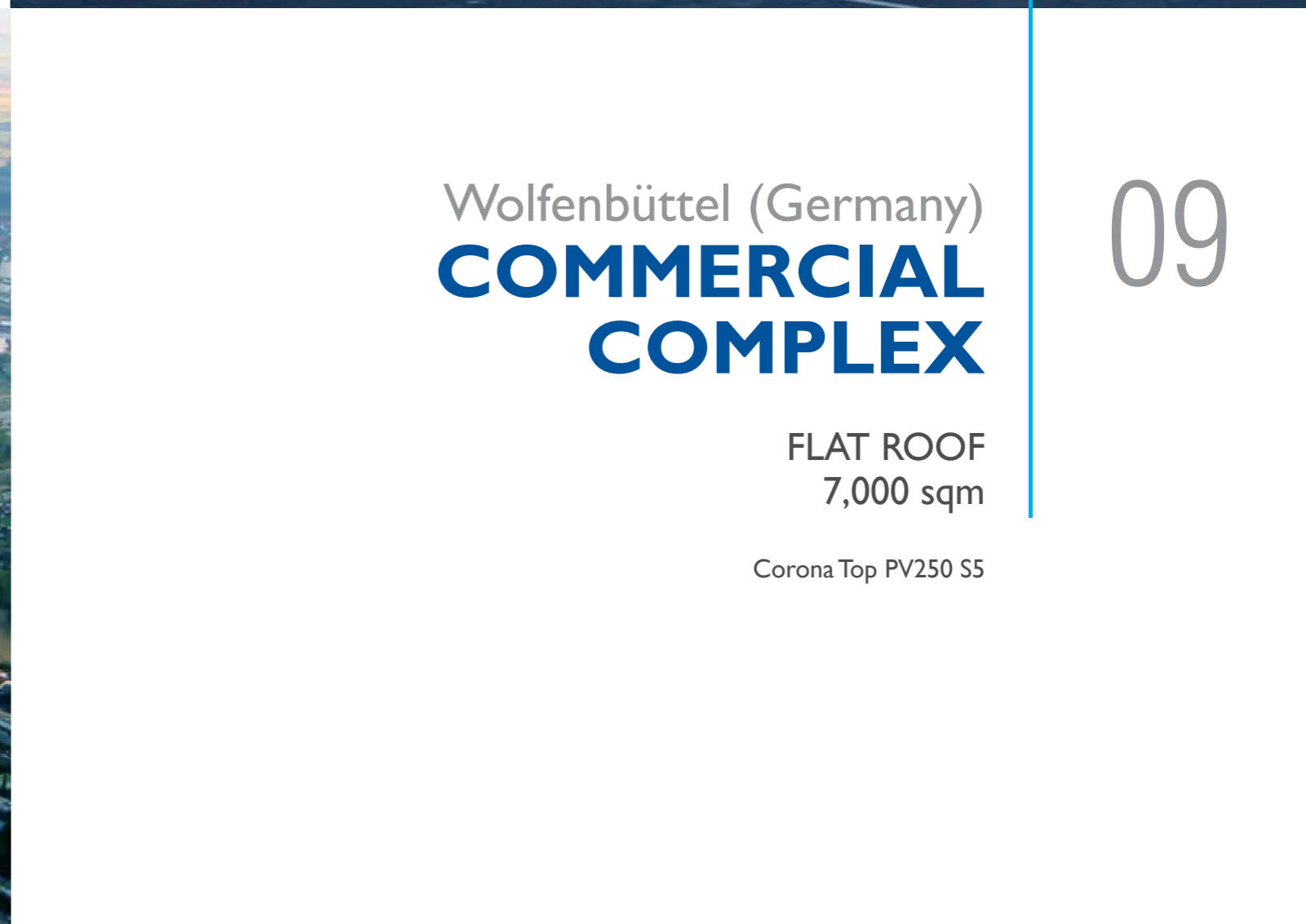


Wolfenbüttel (Germany)
**COMMERCIAL
COMPLEX**

09

FLAT ROOF
7,000 sqm

Corona Top PV250 S5





Sofia (Bulgaria)
**RESIDENTIAL
COMPLEX**

GREEN ROOF
6,500 sqm

Gemini P 4,5 Kg Mineral
Gemini Garden P 4 mm
Solution realized by VJF Ltd

11

10

Ploiesti (Romania)
**RESIDENTIAL
BUILDING**

GREEN ROOF
480 sqm

Gemini Garden P 4 mm
Virgo P 4 mm
Pegasus Spot

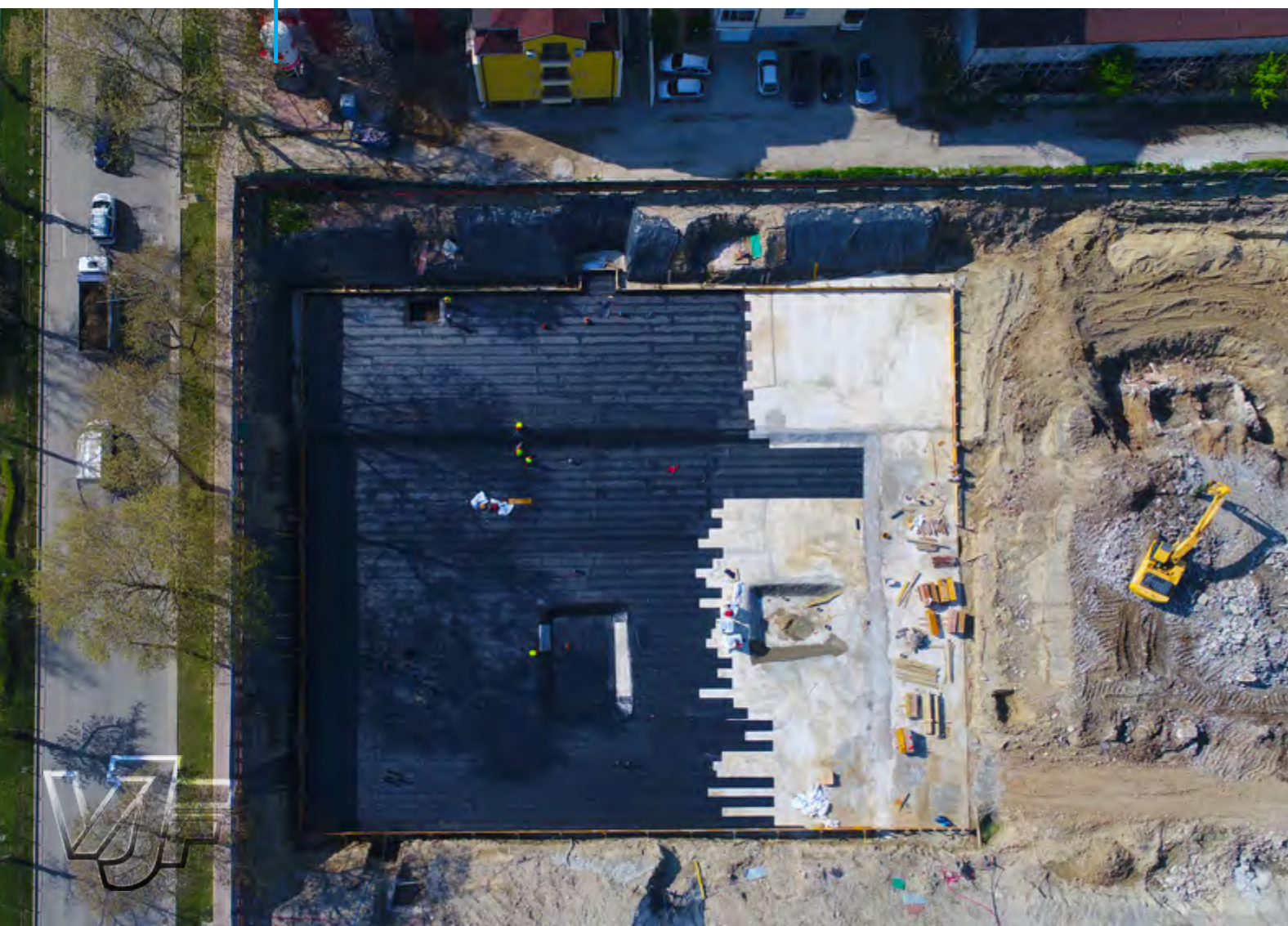


12

Plovdiv (Bulgaria)
**RESIDENTIAL
COMPLEX**

FOUNDATIONS
10,000 sqm

Venus FC 4 mm
Solution realized by VJF Ltd



13

Sofia (Bulgaria)
**SHOPPING
CENTRE**

FOUNDATIONS
8,860 sqm

Venus FC 4 mm
Solution realized by VJF Ltd



N.E.W. REFERENCES

Solutions realised with
Never Ending Waterproofing system:
20 YEARS ensured waterproofing

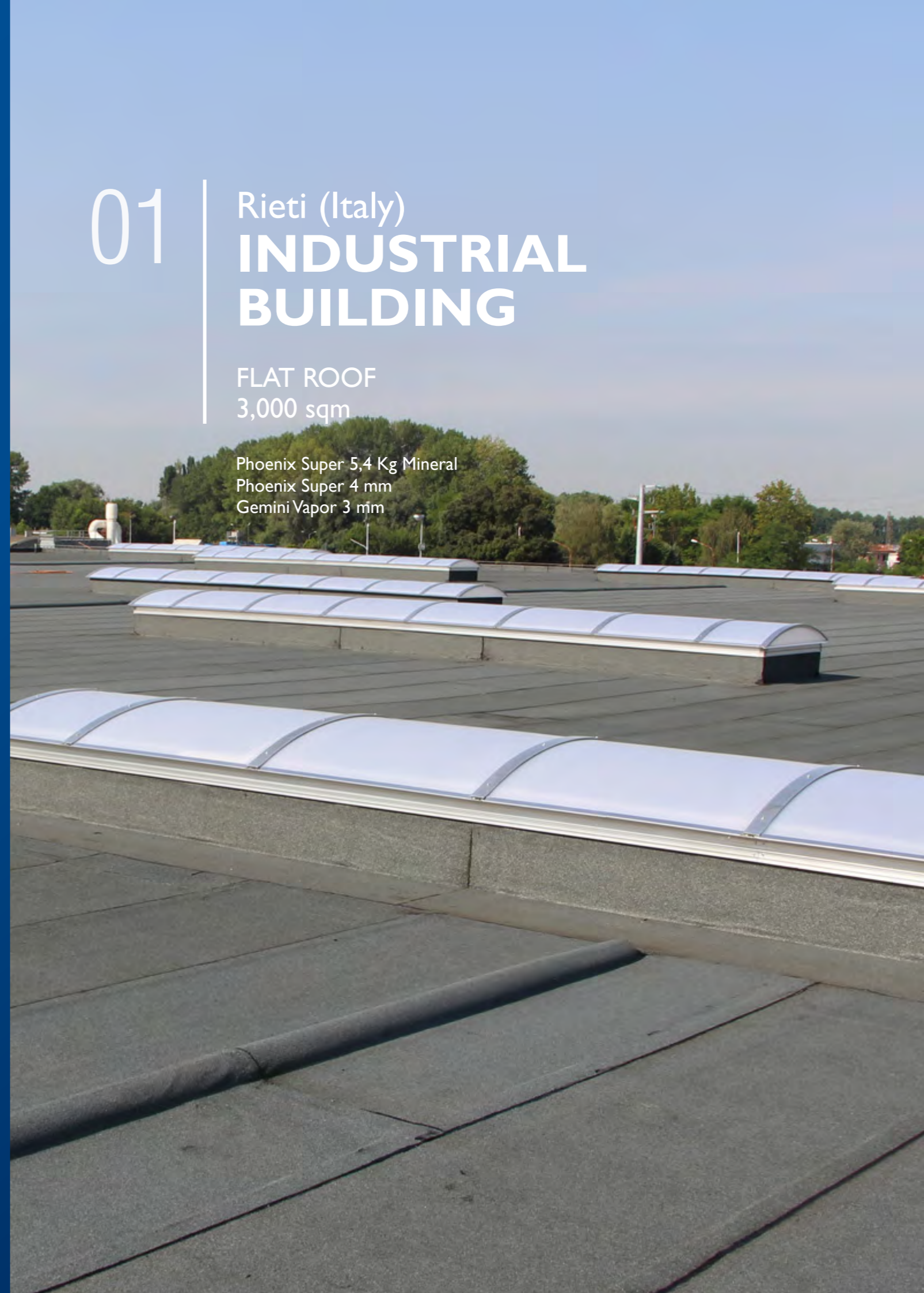
01

Rieti (Italy)

INDUSTRIAL BUILDING

FLAT ROOF
3,000 sqm

Phoenix Super 5,4 Kg Mineral
Phoenix Super 4 mm
Gemini Vapor 3 mm



02

Marcon (Italy)
**INDUSTRIAL
BUILDING**

COMPLEX GEOMETRY

4,100 sqm

99 kWp

Phoenix Super 5,4 Kg Reflect Protection Broof (t2)
Phoenix Solar Tech 4 mm
Gemini FC 4 mm
Integration with photovoltaic system General Solar PV



Belluno (Italy)
**SPORTS
COMPLEX**

03

FLAT ROOF
1,400 sqm

Phoenix Super 5,4 Kg Mineral

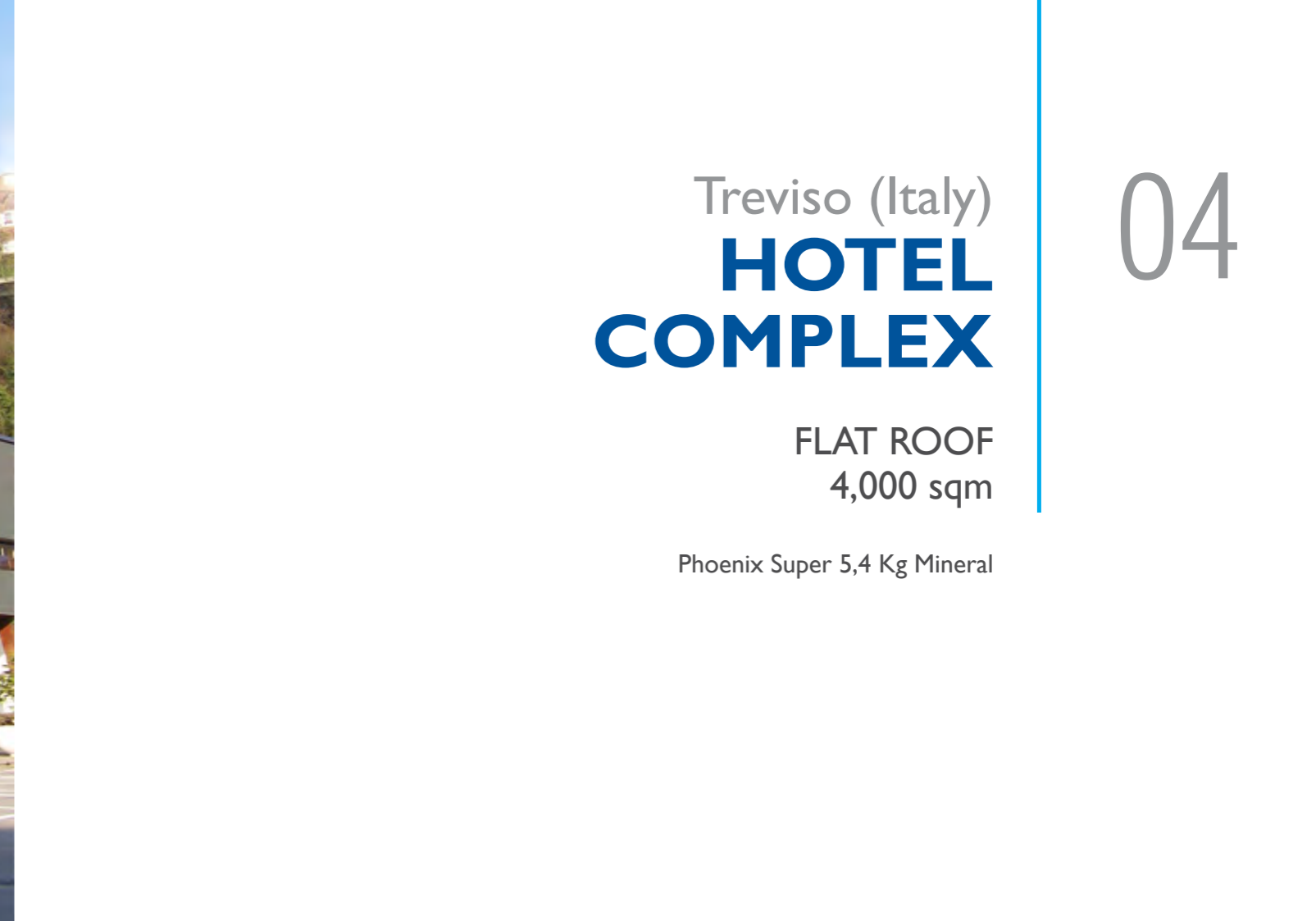


Treviso (Italy)
**HOTEL
COMPLEX**

04

FLAT ROOF
4,000 sqm

Phoenix Super 5,4 Kg Mineral




05

Pordenone (Italy)
**INDUSTRIAL
BUILDING**


FLAT ROOF
2,600 sqm

Phoenix Super 5,4 Kg Reflect Protection Broof (t2)
Phoenix FC 4 mm
Gemini Vapor 4 mm





GENERAL SOLAR PV REFERENCES



Solutions realised with
waterproofing flexible photovoltaic system
architecturally integrated.

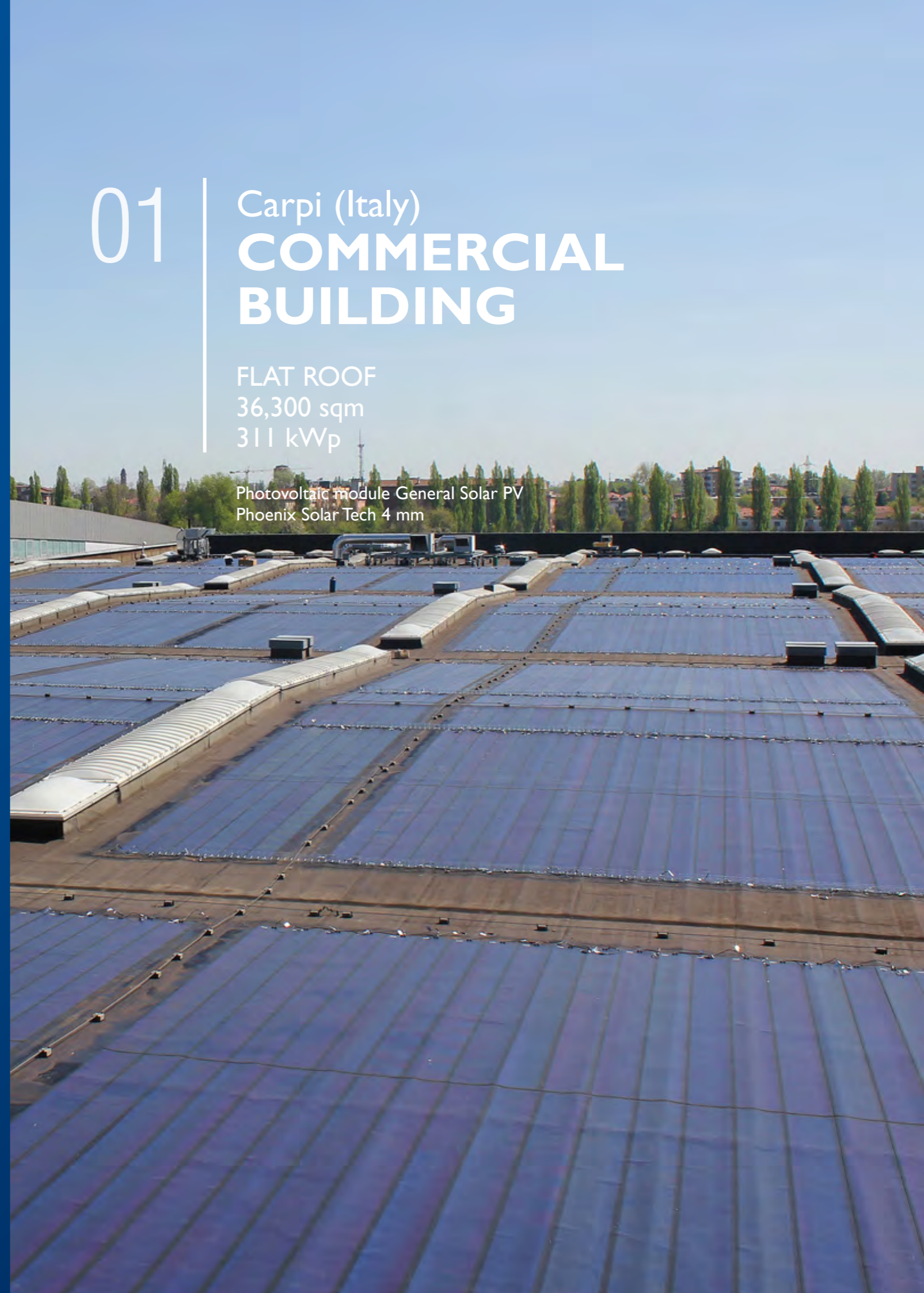
Following its mission and its values,
during the years General Membrane
developed General Solar PV,
to integrate roof protection
from atmospheric agents
with clean electric power production

01

Carpi (Italy)
**COMMERCIAL
BUILDING**

FLAT ROOF
36,300 sqm
311 kWp

Photovoltaic module General Solar PV
Phoenix Solar Tech 4 mm





Nola (Italy)

LOGISTIC CENTRE

FLAT ROOF

20.252 MW_p

The world biggest
integrated bituminous
waterproof flexible
photovoltaic system
(BIPV – *Building Integrated Photovoltaic*)

General SOLAR PV is the technology chosen by **Enel Green Power, Interporto Campano** and **CIS Campania** for the biggest totally integrated photovoltaic system (BIPV) in the world: 20.252 MW_p of power, installed on 590,000 sqm of 60 buildings (between 2010 and 2013).

The system was realised with Auriga FC 4 mm, Phoenix Solar Tech 4 mm and photovoltaic modules General Solar PV.





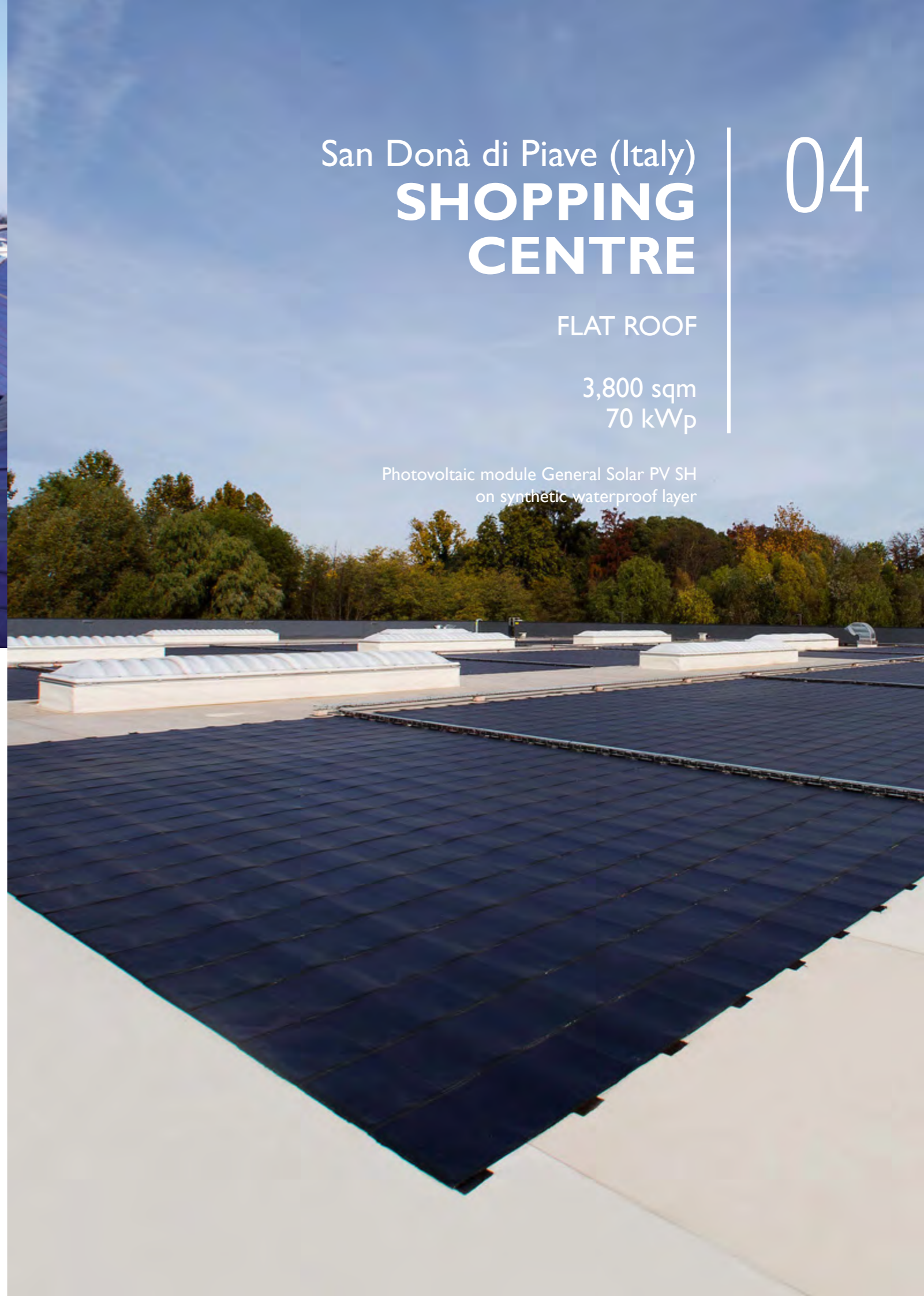
San Donà di Piave (Italy)
**SHOPPING
CENTRE**

04

FLAT ROOF

3,800 sqm
70 kWp

Photovoltaic module General Solar PV SH
on synthetic waterproof layer



03

Crocetta del Montello (Italy)

**INDUSTRIAL
BUILDING**

COMPLEX GEOMETRY

13,200 sqm
430 kWp

Photovoltaic module General Solar PV
Phoenix Solar Tech 4 mm

Salgareda (Italy)

INDUSTRIAL BUILDING

05

COMPLEX GEOMETRY

13,800 sqm
280 kWp

Photovoltaic module General Solar PV
Phoenix Solar Tech 4 mm



Farra di Soligo (Italy)

INDUSTRIAL BUILDING

06

VAULTED ROOF

1,480 sqm
59.98 kWp

Photovoltaic module General Solar PV
Phoenix Solar Tech 4 mm



Pordenone (Italy)

COMMERCIAL BUILDING

FLAT ROOF

5,000 sqm
179.4 kWp

Photovoltaic module General Solar PV
Phoenix Solar Tech 4 mm
Gemini FC 4 mm





Trevignano (Italy)
**RESIDENTIAL
BUILDING**

SLOPED ROOF

90 sqm
6 kWp

Photovoltaic module General Solar PV
Phoenix Solar Tech 4 mm

09

08

Lugano (Switzerland)
**RESIDENTIAL
BUILDING**

FLAT ROOF

120 sqm
7 kWp

Photovoltaic module General Solar PV
Phoenix Solar Tech 4 mm



Pordenone (Italy)

RESIDENTIAL BUILDING

10

COMPLEX GEOMETRY

370 sqm
7.5 kWp

Photovoltaic module General Solar PV
Bituminous shingles Covergen Classic
Phoenix Solar Tech 4 mm



London (United Kingdom)

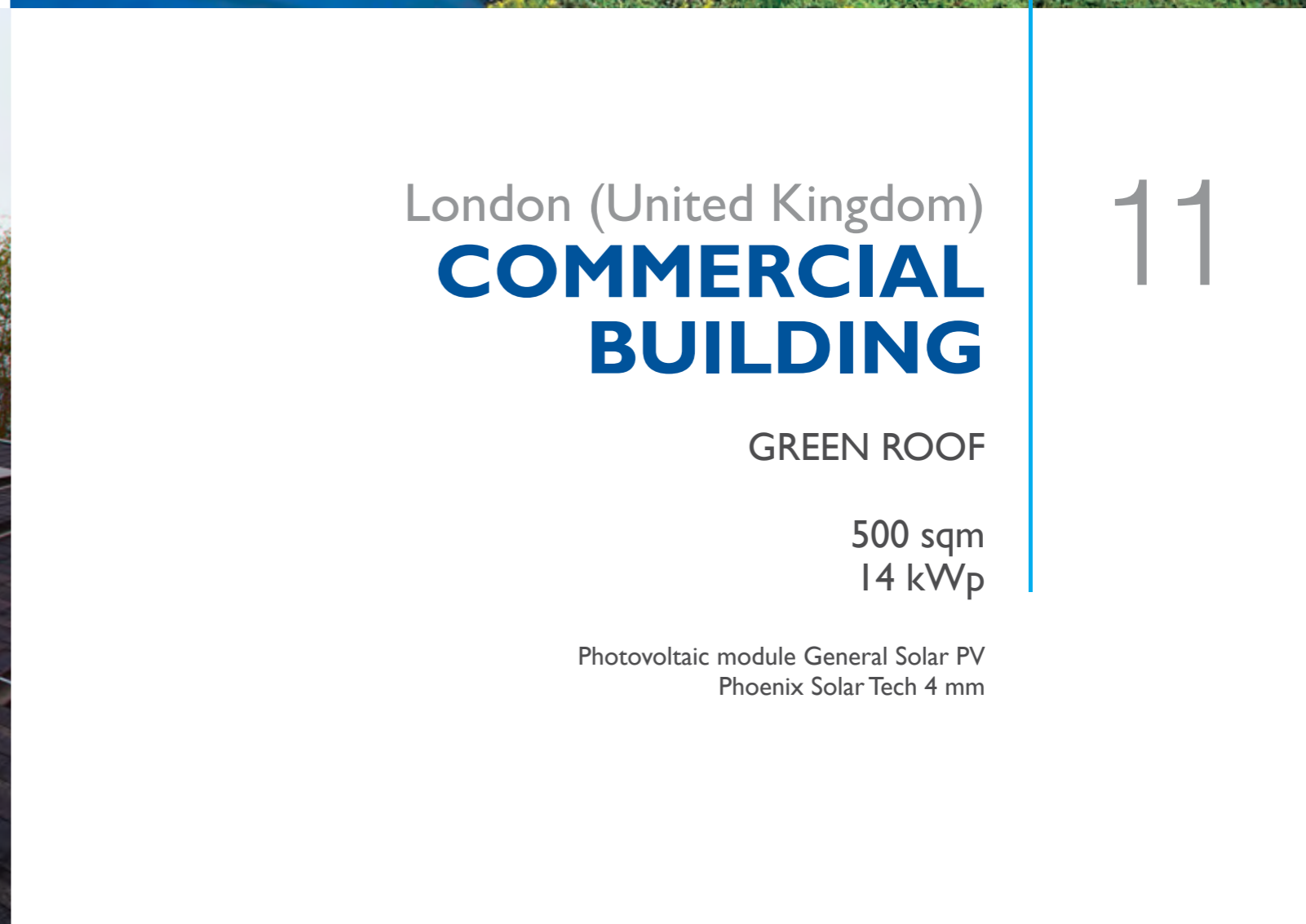
COMMERCIAL BUILDING


11

GREEN ROOF


500 sqm
14 kWp

Photovoltaic module General Solar PV
Phoenix Solar Tech 4 mm





GENERAL FIX REFERENCES



Solutions realised with
the waterproofing system which allows
to anchor technological facilities on the roof

01

San Polo di Piave (Italy)

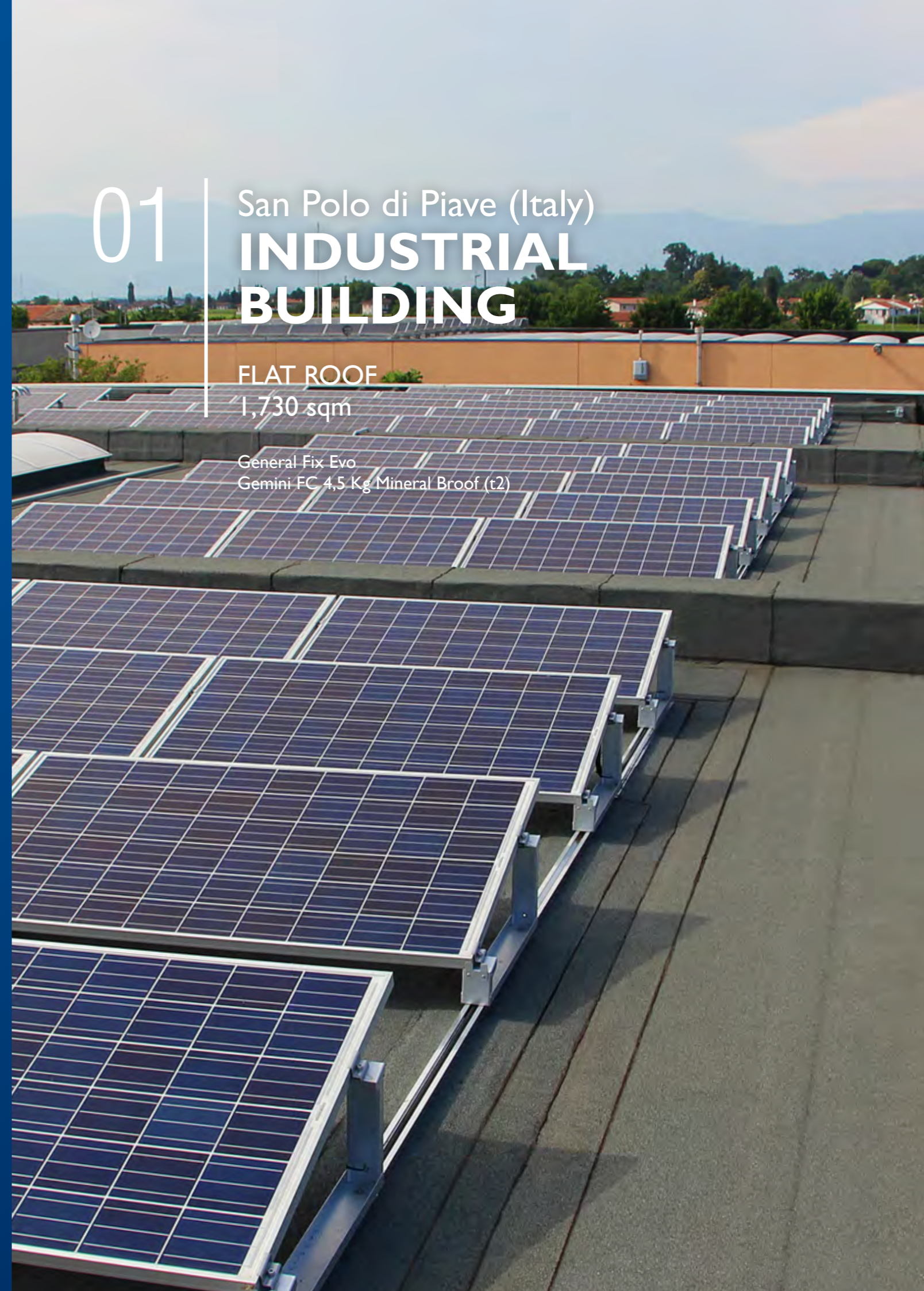
INDUSTRIAL BUILDING

FLAT ROOF

1,730 sqm

General Fix Evo

Gemini FC 4,5 Kg Mineral Broof (t2)



Pasian di Prato (Italy)
**RESIDENTIAL
BUILDING**

02

FLAT ROOF
1,800 sqm

General Fix Evo
Phoenix Super 5,4 Kg Mineral Broof (t2)
Phoenix FC 4 mm
Auriga P 3 mm





Trivolzio (Italy)
**SPORTS
COMPLEX**

FLAT ROOF
500 sqm

General Fix Evo
Phoenix FC 4,5 Kg Reflect Protection
Phoenix Super 4 mm

04

03

Torre Boldone (Italy)
**INDUSTRIAL
BUILDING**

FLAT ROOF
400 sqm

General Fix Evo
Phoenix FC 5,4 Kg Reflect Protection Broof (t2)
Auriga FC 4 mm



05

Cinto Caomaggiore (Italy)
**RESIDENTIAL
BUILDING**

FLAT ROOF
1,500 sqm

General Fix Evo
Phoenix FC 5,4 Kg Reflect Protection Broof (t2)
Phoenix FC 4 mm
Auriga P 3 mm



Designing Durability. Together.





Via Venezia, 538 - 30022 Ceggia (VE) ITALY
Tel. +39 0421.322.000 - Fax +39 0421.322.800

WWW.GENERALMEMBRANE.IT

